

## FastGene Gel Extraction/PCR Kit

 **FastGene™** Gel /PCR Extraction Kit

2 applications in 1 Kit - no extra buffer necessary



**FastGene® Gel/PCR Extraction Kits** are designed for the extraction of DNA from agarose gels and for the purification of PCR products.

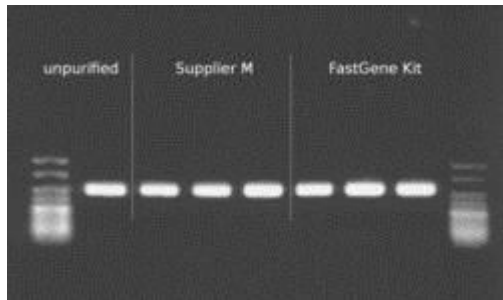
DNA fragments purified with FastGene Gel/PCR Extraction Kits are ready for direct use in all common downstream applications including sequencing, ligation and transformation, restriction digestion, microarray analysis, PCR and in vitro transcription.

### Specifications

Parameter	Gel Extraction	PCR Clean-up
Max. sample volume	300 mg agarose	100 µl PCR Mix
Gel	< 2.5% TAE or TBE	
Typical recovery	70-80%	80-90%
Binding capacity	10 µg	10 µg
DNA fragment length	50 bp - 10 kb	50 bp - 10 kb
Primer removal		< 25 bp
Elution volume	20 - 50 µl	20 -50 µl
Prep time	20 minutes	20 minutes
Format	spin column	spin column

# FastGene Gel Extraction/PCR Kit

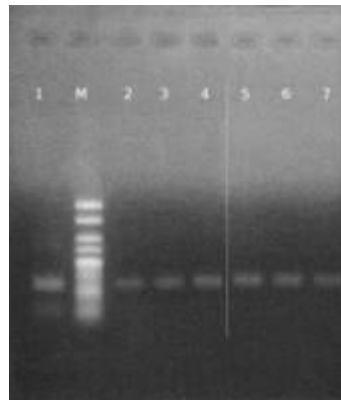
## Application data



**Fig. 1:** PCR fragments of 300 bp were purified from 40 µl of a PCR stock solution using FastGene® Gel/PCR Extraction Kit and a competitor kit, according to manufacturers protocol. DNA was eluted in 20 µl elution buffer and 5 µl of eluate was analyzed on a 1,5% TAE agarose gel.

The figure demonstrates that the FastGene® Gel/PCR Extraction Kit shows up to 90% of DNA recovery.

**Fig. 2:** 10 µl of a PCR stock solution with a 100 bp amplicon were applied on a TBE agarose gel. After electrophoresis the DNA was purified using a competitor kit and the FastGene® Gel/PCR Extraction Kit, according to manufacturers protocol. DNA was eluted in 20 µl elution buffer and 10 µl of eluate was analyzed on a 2% TAE agarose gel.













The DNA recovery from agarose gels using FastGene® Gel/PCR Extraction Kits is very high even for small fragments.

Lane 1: Unpurified PCR fragment; M = Marker  
Lane 2,3 and 4: Supplier M  
Lane 5,6 and 7: FastGene® Gel/PCR Extraction Kit

# FastGene Gel Extraction/PCR Kit

## Protocol Flow Chart

	DNA extraction from gel	Purification of PCR products
Sample preparation	 <p>up to 300mg of gel 500µl of GP1 Vortexing 55°C ; 10 - 15min invert the tube</p>	 <p>PCR products : Buffer GP1 = 1 : 5 (e.g. 40µl : 200µl) Vortexing</p>
Sample loading	 <p>Load the sample onto the column 13,000rpm ; 30sec</p>	 <p>Load the sample onto the column 13,000rpm ; 30sec</p>
Membrane washing	 <p>600µl of GP2 13,000rpm ; 30sec ] *</p> <p>* For TBE gels this wash step should be repeated.</p>	 <p>600µl of GP2 13,000rpm ; 30sec</p>
Membrane drying	 <p>13,000rpm ; 2min</p>	 <p>13,000rpm ; 2min</p>
Elution	 <p>20 - 50µl of GP3 2min at room temperature 13,000rpm ; 2min</p>	 <p>20 - 50µl of GP3 2min at room temperature 13,000rpm ; 2min</p>

## Ordering Information

Cat No	Description	Contents
P4-0506S (FG-94602)	Fastgene® Gel/PCR Extraction Trial Kit 4 Preps	Binding Buffer (3ml), Wash Buffer (1ml), Elution Buffer (1ml), 4 x Fastgene® Column Sets
P4-0506 (FG-91202)	Fastgene® Gel/PCR Extraction Kit 100 Preps	Binding Buffer (80ml), Wash Buffer (25ml), Elution Buffer (10ml), 100 x Fastgene® Column Sets, 5 x Gel Band Cutters
P4-0508 (FG-91302)	Fastgene® Gel/PCR Extraction Kit 300 Preps	Binding Buffer (200ml), Wash Buffer (40ml), Elution Buffer (30ml), 300 x Fastgene® Column Sets, 5 x Gel Band Cutters