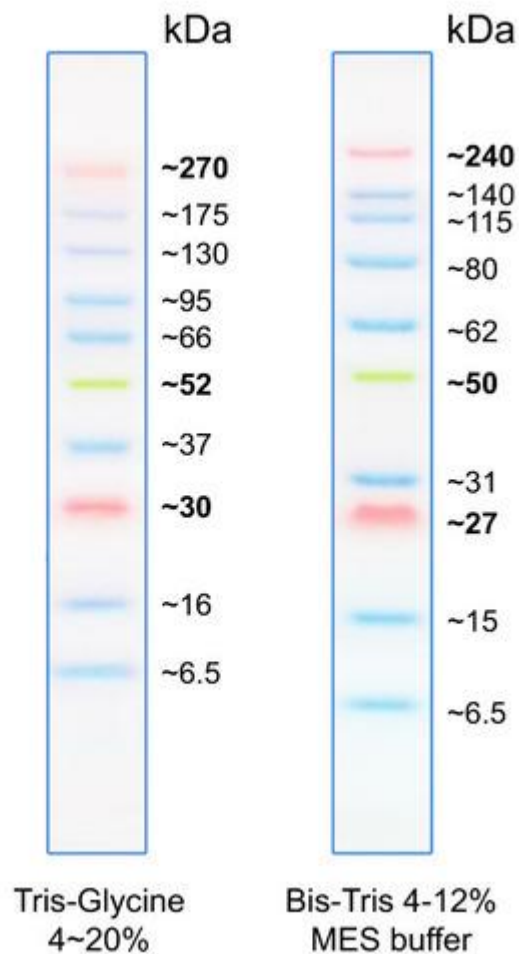


BlueEasy Prestained Protein Ladder

Applications

The **BlueEasy** Prestained Protein Ladder is designed for monitoring protein separation during SDS-polyacrylamide gel electrophoresis, verification of Western transfer efficiency on membranes (PVDF, nylon, or nitrocellulose) and for approximating the size of proteins.

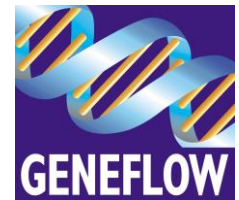


Contents

Approximately 0.1~0.4 mg/ml of each protein in the buffer (62,5 mM Tris-phosphate, pH 7.5 at 25°C), 2 % SDS, 10 mM Dithiothreitol, 1 mM EDTA, and 33 % (v/v) Glycerol).

Quality Control

Under suggested conditions, **BlueEasy** Prestained Protein Ladder resolves 10 major bands in polyacrylamide gel with appropriate buffers and after Western blotting to nitrocellulose and other membranes.



BlueEasy Prestained Protein Ladder

Storage

Stable for up to 2 weeks at 25°C. Stable for up to 3 months at 4°C. For long term storage, store at -20°C.

Loading

3 µl or 5 µl per loading for clear visualization during electrophoresis on 15-well or 10-well mini-gel, respectively.

1.5~2.5 µl per well for general Western transferring. Apply more for thicker (> 1.5 mm) or larger gel.

Ordering Information

Product No.	Description
S6-0027	BlueEasy Pre-Stained Protein Ladder, 6.5-270kDa, 500ul, approx 250 loads