

ProteoSpin™ Abundant Serum Protein Depletion Kit

The ProteoSpin™ Abundant Serum Protein Depletion Kit provides a fast and simple procedure for the effective depletion of major serum proteins including albumin, α-antitrypsin, transferrin and haptoglobin from serum and plasma samples. The kit is unique in that it is based on an ion-exchange mechanism and not the use of specific antibodies. As a result, the kit can be used to deplete serum proteins from a wide variety of samples, including human and various animals. Albumin has been found to be depleted by 70%, transferrin and haptoglobin by 50% and α-antitrypsin by 90%. The complexity of the sample is thus greatly reduced, allowing for the detection of less abundant proteins present in the sam-



ple. Eluted samples are ready for use in various downstream applications including 2D gel electrophoresis, LC/MS and microarrays.

The ProteoSpin™ Abundant Serum Protein Depletion Kit contains sufficient materials for 25 preparations. Each spin column can deplete up to 500 µg of abundant serum proteins. Preparation time for 10 samples is less than 30 minutes. The kit has a shelf life of at least 1 year when stored as suggested.

Kit Specifications			
Maximum Column Capacity	150 µg	Minimum Elution Volume	30 µL
Minimum Column Capacity	50 µg	Time to Process 10 Samples	30 minutes

ProteoSpin™ Abundant Serum Protein Depletion Kit Benefits

Efficient removal of highly abundant proteins	The kit depletes albumin, α-antitrypsin, transferrin and haptoglobin, enabling visualization of low abundance proteins
Fast and easy processing	Efficiently process up to 10 samples in less than 30 minutes
Does not rely on antibodies	Based on an ion-exchange mechanism, the kit can be applied to serum and plasma samples from a range of sources
Complete kit	All columns and solutions required are provided
Affordable	Compared to columns based on antibodies, these columns are much lower in price

ProteoSpin™ Abundant Serum Protein Depletion Kit

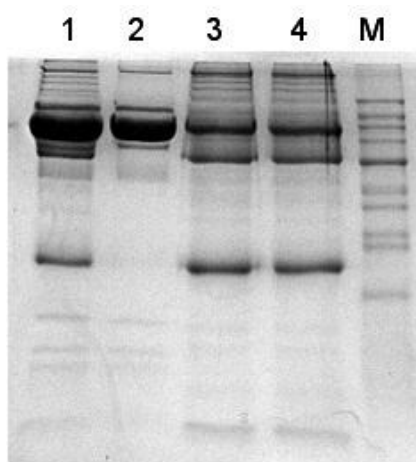


Figure 1. Depletion of Abundant Proteins. Abundant proteins were depleted from human serum using the ProteoSpin™ Abundant Serum Protein Depletion Kit. Lane 1 represents the input human serum proteins, while Lanes 3 and 4 represent the elution after the abundant proteins were depleted with the kit. Lane 2 represents the binding flowthrough, and contains the proteins that have been depleted from the serum sample.

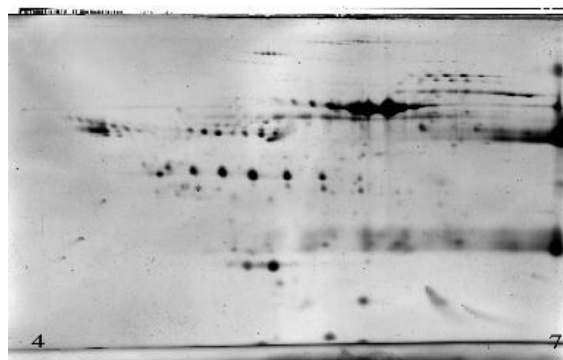


Figure 2. Depletion of Abundant Proteins. A 2D gel was run after the abundant serum proteins were depleted from human serum using the ProteoSpin™ Abundant Serum Protein Depletion Kit. The abundant proteins including albumin, α -antitrypsin, transferrin and haptoglobin have been removed from the sample, allowing the visualization and detection of the lower abundance proteins of interest.

ProteoSpin™ Abundant Serum Protein Depletion Kit Contents

1. Wash Solution G
2. Elution Buffer C
3. Protein Neutralizer
4. Mini Spin Columns
5. Collection Tubes
6. Elution tubes (1.7 mL)
7. Product Insert

Shipping Conditions

The ProteoSpin™ Abundant Serum Protein Depletion kit is shipped at room temperature.

Customer-Supplied Reagents and Equipment

- Benchtop microcentrifuge
- Micropipettors

Storage Conditions

All solutions should be kept tightly sealed and stored at room temperature. Once opened, the solutions should be stored at 4°C. All the reagents should remain stable for at least 1 year in their unopened containers.

Cat #	Description	Quantity
17300	ProteoSpin™ Abundant Serum Protein Depletion Kit	25 preps